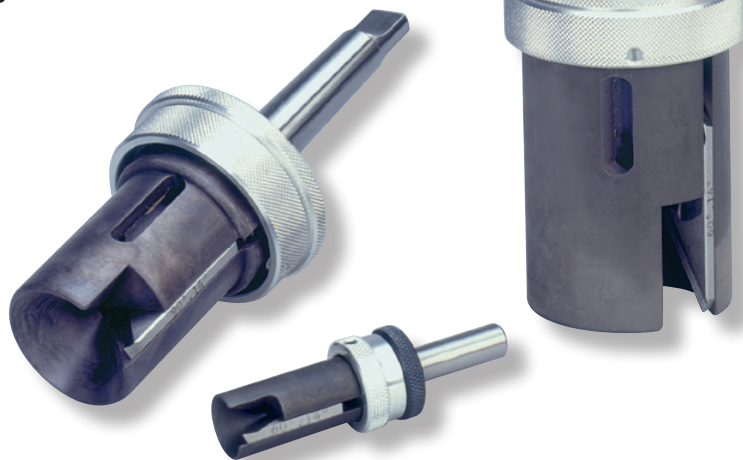
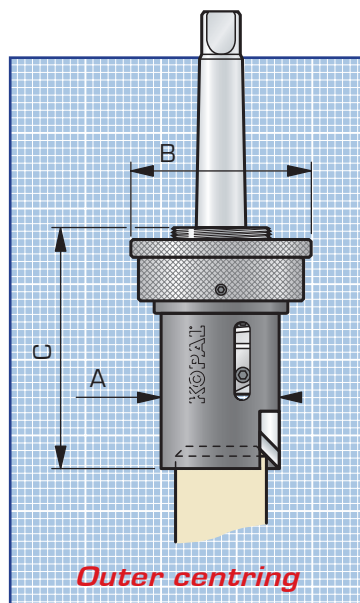
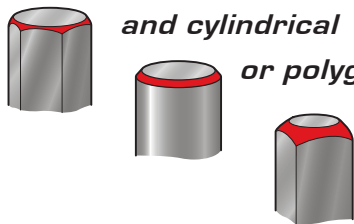


Outer Devices

Chamfers all tube ends

and cylindrical

or polygonal bar ends



Model	Ø A	Ø B	C 90°/60°
2-18	18	26	54
2-36	42	65	85/105
10-46	48	65	85/109
20-60	60	70	85/109
40-80	80	90	95/118
60-100	100	110	107
80-120	120	130	110



The HSS blades are sharpened with cutting angles of : **0° - 14° - 20° and 25°**, to be specified on ordering. Carbide blades with cutting angle of 0°.

Model	Diameter of the chamfering	Attach.	Angle au sommet du chanfrein	
			60° Ref.	90° Ref.
2 - 18	2 to 17	Cyl. Ø 10 CM1	02-020	02-010
			02-025	02-015
4 - 36	4 to 37	Cyl. Ø 10/Ø 16 CM2	02-055	02-035
			02-050	02-030
10 - 46	9 to 45	Cyl. Ø 10/Ø 16 CM2	02-110	02-095
			02-105	02-090
20 - 60	21 to 57	CM2	02-140	02-135
40 - 80	40 to 77	CM2	02-155	02-150
		CM3	02-156	02-151
60 - 100	60 to 97	CM3		02-166
80 - 120	80 to 117	CM3		02-181



Outer blades replacement

HSS blade 60°	Ref.
2 - 18	02-305
2 - 36 à 40 - 80	02-315
HSS blade 90°	
2 - 18	02-300
3 - 36 à 80 - 120	02-310

Blades

1 cutting edge for small models 2-18.
All the other models have 2 cutting edges.

